



## MISSION STATEMENT

**Thetford Academy's mission is to celebrate the unique worth of all students, to nurture their strengths, and to challenge them to fulfill their potential.**

## AT A GLANCE

- Founded in 1819, TA is Vermont's oldest secondary school
- TA follows the New England town academy model, combining a public school mission with an independent governance structure
- Serves as the designated secondary school for the town of Thetford and as a high school option for sending towns throughout the Upper Valley region
- Enrolls approximately 310 students annually in grades 7–12
- Average class size of 14 students
- Offers a challenging college preparatory program with a variety of extended learning opportunities
- 295-acre campus that provides an outdoor learning lab with trails, forest, greenhouse, ropes course, and multiple outdoor classrooms
- Co-curricular program includes 7 varsity sports and numerous student clubs
- Located in the town of Thetford (approximate population 2500) within Orange County, federally designated as a rural county
- Situated in the Upper Valley region, which includes Dartmouth College, Dartmouth Hitchcock Medical Center, Vermont Law School and other institutions that create a rich environment of culture, arts, science, and more
- Enrolls international students, most recently from Italy, China, South Korea, and Spain

## EXTENDED LEARNING

Thetford Academy students have myriad opportunities to engage in extended learning on and off campus.

- Dual Enrollment courses at Dartmouth College and the Vermont State Colleges are available to Thetford Academy students at no cost (11th–12th).
- TA's Challenge Course option allows students to design and pursue their own course of study on a topic of personal interest with a mentor (9th–12th).
- Our STEM internship with corporate partners Fujifilm Dimatix and Hypertherm gives students hands-on experience in all aspects of business including engineering, marketing, research, and development (11th–12th).
- Environmental Studies and Outdoor Education, a half-day interdisciplinary course, takes place on campus and in the surrounding forests (10th–12th).
- Technical education programs at regional career and technical centers prepare students for careers and future training (11th–12th).
- Work-Based Learning provides the opportunity for students to earn high school credit while working at local businesses (11th–12th).

## CONTACTS

**Carrie Brennan, Head of School**

carrie.brennan@thet.net

**Mark Pichette, Director of Counseling Services**

mark.pichette@thet.net

**Molly Dugan-Sullivan, Counselor**

molly.dugan-sullivan@thet.net

**Rebecca Walter, Counselor**

rebecca.walter@thet.net

**Tippi Oshoniyi, Counseling Team Coordinator**

tippi.oshoniyi@thet.net

## GRADING SYSTEM

A traditional A B C D F model, numerically translated as:

100-97 = A+	82-80 = B-	66-63 = D
96-93 = A	79-77 = C+	62-60 = D-
92-90 = A-	76-73 = C	59- = F
89-87 = B+	72-70 = C-	
86-83 = B	69-67 = D+	

## GRADUATION REQUIREMENTS

Most courses meet for an 85-minute block period daily, with high school students taking up to four courses per semester. Twenty-six credits are needed for graduation, including:

- English: 4 units
- Mathematics: 3 units
- Social Studies: 3 units
- Science: 3 units
- Health: .5 units
- Physical Education: 1.5 units
- Arts: 1 unit

## HONORS COURSES

The following honors courses were available to the Class of 2023. Courses marked with an \* have an embedded honors option.

### Humanities

English 9\*  
English 10\*  
Human Nature  
in Literature  
Honors American  
Literature  
World Civilizations\*  
US History\*  
Modern World History\*

### STEM

Algebra I\*  
Algebra II Honors  
PreCalculus  
Calculus  
Advanced Chemistry  
Advanced Biology

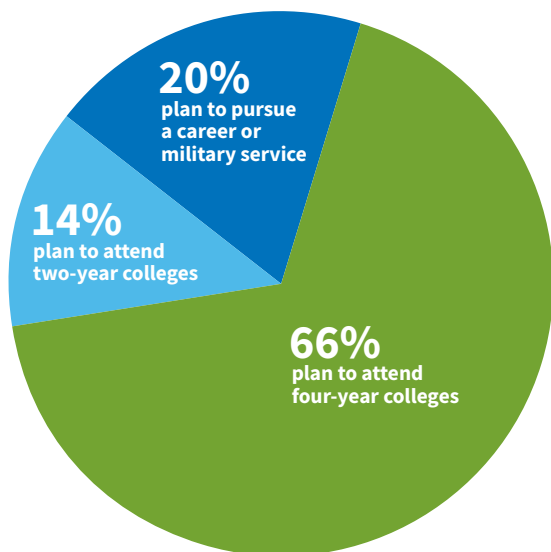
### Foreign Languages

Advanced French  
Advanced Spanish  
**Art**  
Advanced Art

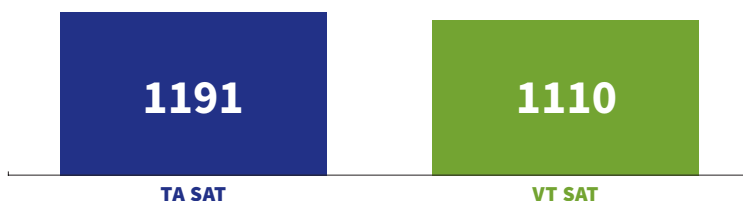
## GPA/CLASS RANK | Class of 2023

<b>Top 10%:</b> 3.98 and above	<b>Top 50%:</b> 3.69 and above
<b>Top 20%:</b> 3.92 and above	<b>Top 60%:</b> 3.61 and above
<b>Top 30%:</b> 3.87 and above	<b>Top 70%:</b> 3.42 and above
<b>Top 40%:</b> 3.72 and above	

## POST-SECONDARY PLANS | Classes of 2018-2022



## TEST SCORES | Classes of 2018-2022



SAT Average SAT Scores			
TA		Vermont	
Critical Reading	598	Critical Reading	563
Math	593	Math	547
<b>TA</b>	<b>1191</b>	<b>Vermont</b>	<b>1110</b>

## ACCREDITATION



Thetford Academy is accredited by the New England Association of Schools and Colleges.