



MISSION STATEMENT

Thetford Academy's mission is to celebrate the unique worth of all students, to nurture their strengths, and to challenge them to fulfill their potential.

AT A GLANCE

- Founded in 1819, TA is Vermont's oldest secondary school
- TA follows the New England town academy model, combining a public school mission with an independent governance structure
- Serves as the designated secondary school for the town of Thetford and as a high school option for sending towns throughout the Upper Valley region
- Enrolls approximately 310 students annually in grades 7–12
- Average class size of 14 students
- Offers a challenging college preparatory program with a variety of extended learning opportunities
- 295-acre campus that provides an outdoor learning lab with trails, forest, greenhouse, ropes course, and multiple outdoor classrooms
- Co-curricular program includes 9 varsity sports and numerous student clubs
- Located in the town of Thetford (approximate population 2500) within Orange County, federally designated as a rural county
- Situated in the Upper Valley region, which includes Dartmouth College, Dartmouth Hitchcock Medical Center, Vermont Law School and other institutions that create a rich environment of culture, arts, science, and more
- Enrolls international students, most recently from Italy, China, South Korea, and Spain (approximately 2% of TA's high school enrollment)

EXTENDED LEARNING

Thetford Academy students have myriad opportunities to engage in extended learning on and off campus.

- Dual Enrollment courses at Dartmouth College (when available) and the Vermont State Colleges are available to qualifying juniors and seniors.
- TA's Challenge Course option allows students to design and pursue their own course of study on a topic of personal interest with a mentor (9th–12th). Maximum 1 credit per year.
- Our STEM internship with corporate partners Fujifilm Dimatix and Hypertherm gives students hands-on experience in all aspects of business including engineering, marketing, research, and development.
- Environmental Studies and Outdoor Education, a half-day interdisciplinary course, takes place on campus and in the surrounding forests (10th–12th).
- Technical education programs at regional career and technical centers prepare students for careers and future training (11th–12th), and can include co-op work based experience.



CONTACTS

Carrie Brennan, Head of School

carrie.brennan@thet.net

Mark Pichette, Director of Counseling Services – Grades 10-12

mark.pichette@thet.net

Molly Dugan-Sullivan, Counselor – Grades 7-9

molly.dugan-sullivan@thet.net

Tippi Oshoniyi, Counseling Team Coordinator

tippi.oshoniyi@thet.net

GRADING SYSTEM

A traditional A B C D F model, numerically translated as:

100–97 = A+	82–80 = B-	66–63 = D
96–93 = A	79–77 = C+	62–60 = D-
92–90 = A-	76–73 = C	59–0 = F
89–87 = B+	72–70 = C-	
86–83 = B	69–67 = D+	

GPA/CLASS RANK | CLASS OF 2024

Top 10%: 3.98 and above	Top 50%: 3.49 and above
Top 20%: 3.89 and above	Top 60%: 3.14 and above
Top 30%: 3.82 and above	Top 70%: 2.67 and above
Top 40%: 3.70 and above	

TEST SCORES | Classes of 2019-2023

1198

TA SAT

1105

VT SAT

Average SAT Scores

TA		Vermont	
Critical Reading	601	Critical Reading	561
Math	597	Math	544
TA	1198	Vermont	1105

ACCREDITATION



Thetford Academy is accredited by the
New England Association of Schools and Colleges.

GRADUATION REQUIREMENTS

Most courses meet for an 85-minute block period daily, with high school students taking up to four courses per semester. Twenty-six credits are needed for graduation, including:

- English: 4 units
- Mathematics: 3 units
- Social Studies: 3 units
- Science: 3 units
- Health: .5 units
- Physical Education: 1.5 units
- Arts: 1 unit
- Portfolio Presentation

A TA student meets the requirements for graduation when: the student demonstrates proficiency in the curriculum content areas; earns the required number and distribution of credits, and demonstrates proficiency in the schoolwide transferable skills through development and presentation of an academic portfolio.

HONORS COURSES

The following honors courses were available to the Class of 2024. Courses marked with an * have an embedded honors option.

Humanities

English 9*
English 10*
Human Nature in Literature
Honors American Literature
World Civilizations*
US History*
Modern World History*
Economics

STEM

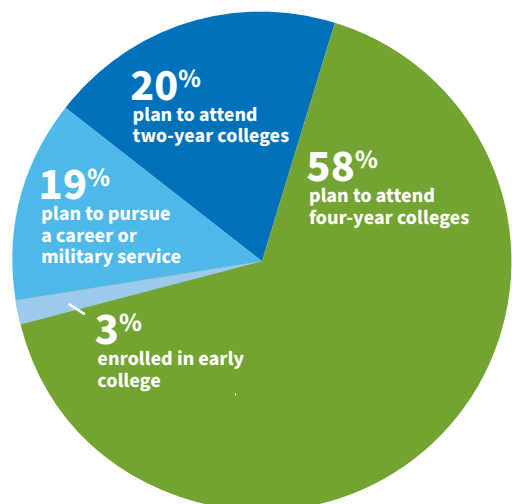
Algebra I*
Geometry*
Algebra II Honors
PreCalculus
Calculus
Conceptual Physical Science*
Biology*
Physics - Waves
Advanced Biology
Advanced Chemistry

World Languages

Advanced French
Advanced Spanish
Art
Advanced Art

Thetford Academy offers a rigorous academic program through honors and embedded honors course options, independent study, and dual enrollment opportunities. Advanced Placement (AP) courses are not part of the academic program at Thetford Academy.

POST-SECONDARY PLANS | Classes of 2022–2024



Thetford
ACADEMY

304 Academy Road
Thetford Center, VT 05075

802.785.4805
thetfordacademy.org

@thetfordacademy
@ThetfordAcademyVT

CEEB Code: 460450

ACCEPTANCES AT FOUR-YEAR COLLEGES & UNIVERSITIES| Classes of 2021-2023

**Asterisk indicates student matriculated*

Adelphi University
Agnes Scott College
Alfred University
American University
Anglo-American University
Arizona State University - Tempe*
Bard College
Bentley University
Boston College*
Boston University
Brandeis University
Brigham Young University-Provo
Bryant University
Bryn Mawr College
Champlain College*
Clark University
Clarkson University
Coastal Carolina University*
Colby-Sawyer College
College of the Atlantic
Community College of Vermont*
Connecticut College
Culinary Institute of America*
Dalhousie University
Dean College
Denison University
Dickinson College
Embry-Riddle Aeronautical University
- Daytona Beach*
Emerson College
Emmanuel College*
Endicott College*
Flathead Valley Community College*
Fordham University
Fort Lewis College*
Franklin Pierce University
George Mason University
Hampton University
Hartwick College
Hobart William Smith Colleges
Hofstra University*
Husson University
Ithaca College
Jacksonville University
Johnson & Wales University- Providence
Keene State College
Kenyon College
Landmark College
Le Moyne College

Lesley University
Macalester College*
Marquette University
McGill University
Merrimack College
Montana State University (College of Engineering)
Moravian University
Mount Holyoke College
New Jersey City University
NHTI-Concord's Community College
Northeastern University
Northern Vermont University- Johnson*
Northern Vermont University-Lyndon (See Profile for Vermont State University)
Norwich University*
Oberlin College*
Ohio State University - Main Campus
Pace University, New York City Campus*
Paul Smith's College
Pennsylvania State University- Penn State Main Campus
Pepperdine University
Plymouth State University
Providence College
Quinnipiac University*
Reed College
Regis College*
Rensselaer Polytechnic Institute*
River Valley Community College
Rivier University
Roanoke College
Rochester Institute of Technology
Roger Williams University
Russell Sage College
Saint Joseph's University
Saint Michael's College*
Salve Regina University
Santa Clara University
Siena College*
Simmons University*
Skidmore College
Smith College*
Southern Maine Community College*
Southern New Hampshire University
Springfield College
St. Lawrence University*
Stonehill College
Stony Brook University

Suffolk University*
SUNY College of Agriculture and Technology at Cobleskill*
SUNY College of Environmental Science and Forestry
The George Washington University*
The University of Montana*
The University of Tampa
Union College (NY)
University of Bridgeport
University of Colorado Boulder
University of Connecticut
University of Denver
University of Florida
University of Guelph*
University of Hartford
University of Illinois at Urbana - Champaign
University of Maine
University of Maine at Farmington
University of Massachusetts - Amherst*
University of Massachusetts - Boston
University of Massachusetts - Dartmouth
University of New England*
University of New Hampshire - Main Campus*
University of New Haven*
University of North Florida
University of North Georgia
University of Pittsburgh - Pittsburgh Campus
University of Rhode Island
University of Rochester
University of Southern Maine*
University of St. Thomas (MN)
University of Toronto
University of Vermont*
University of Vermont (College of Arts & Sciences)
University of Washington - Seattle Campus*
Utica University
Vassar College*
Vermont State University*
Vermont Technical College (Please see the profile for Vermont State University)*
Warren Wilson College
West Virginia University
Wheaton College - Massachusetts
Worcester Polytechnic Institute